

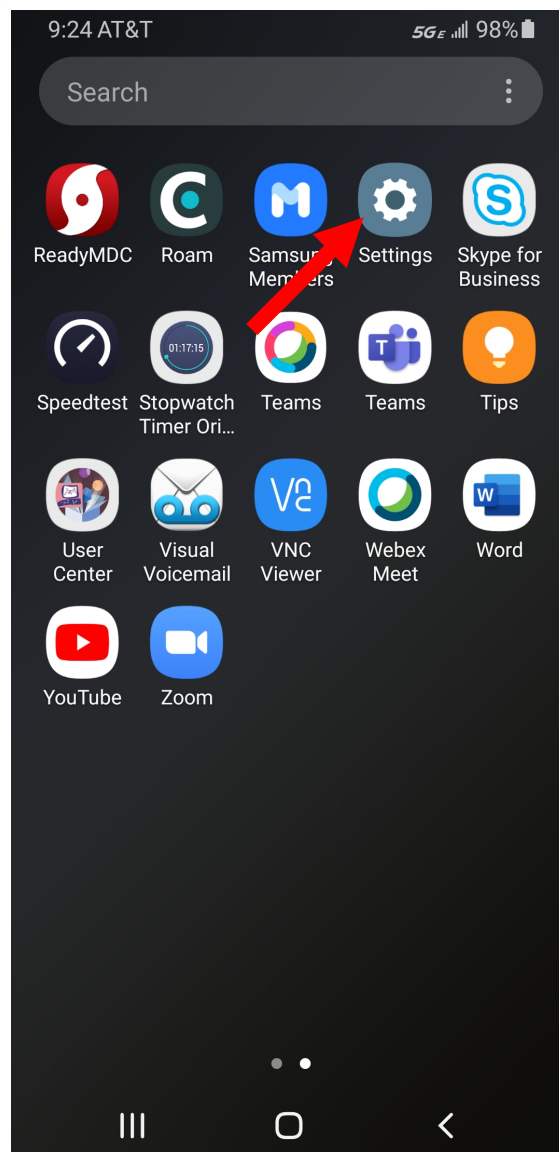
Wi-Fi Internet Access Connection Procedure

Android

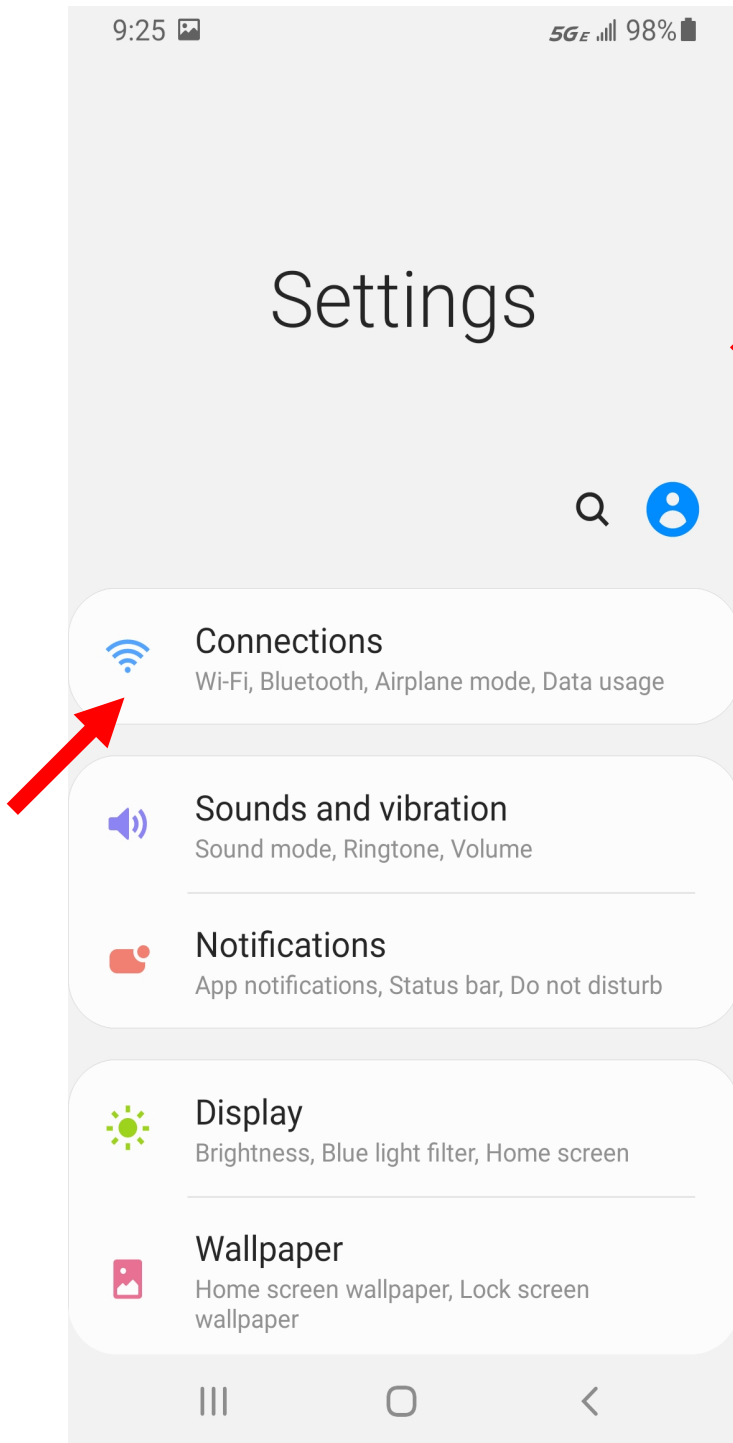
The library has provided wireless network service to connect your personal Android device to the World Wide Web while at your public library. All you need is an Android device with wireless adapter (Wi-Fi) and web browser. (NOTE: Your web browser must have cookies enabled to access the internet. Network settings must be set to automatic and proxies must be disabled.)

The following section describes how to connect to a wireless network using the **Settings App** in Android. This document presumes that you have the appropriate permissions on your device to setup a wireless connection.

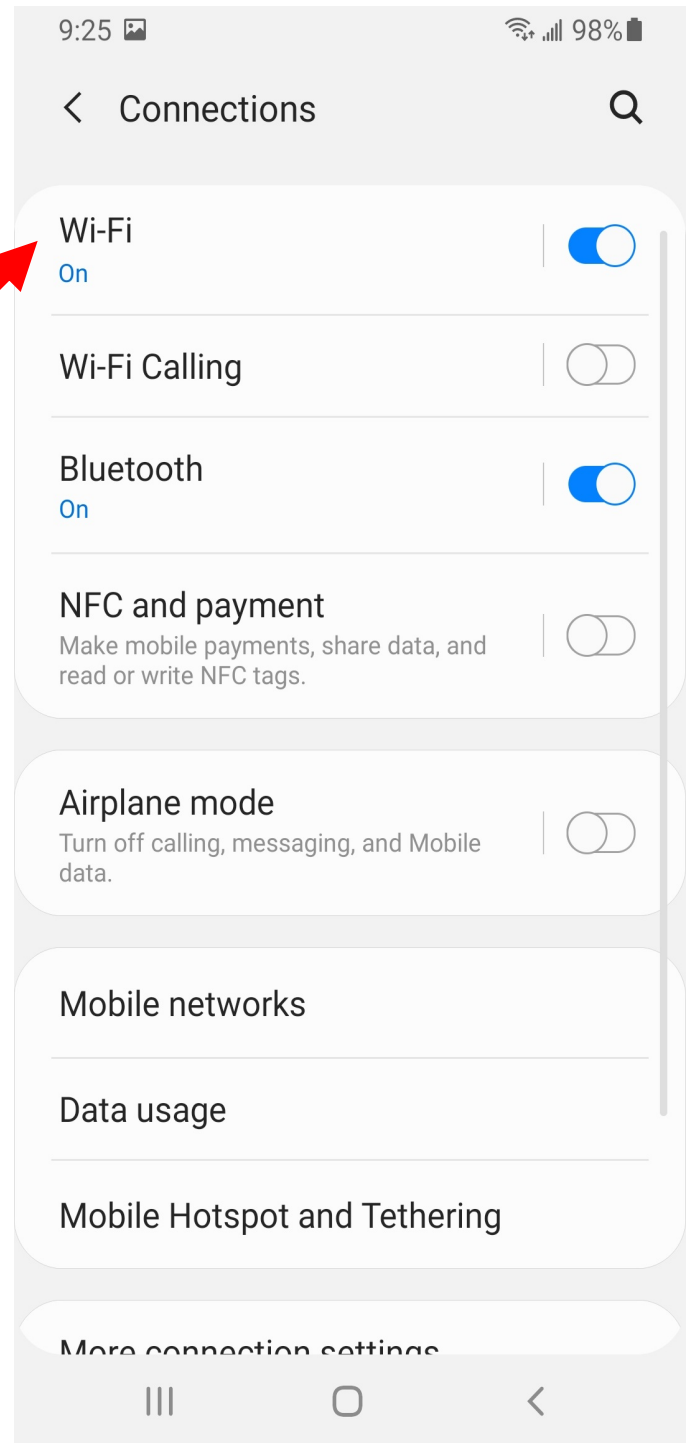
1. Tap on the **Settings** app



2. Once in the **Settings Screen**, select **Connections**. From the **Connections Screen** select **Wi-Fi** to get to the screen where you will connect to a wireless network as shown below.

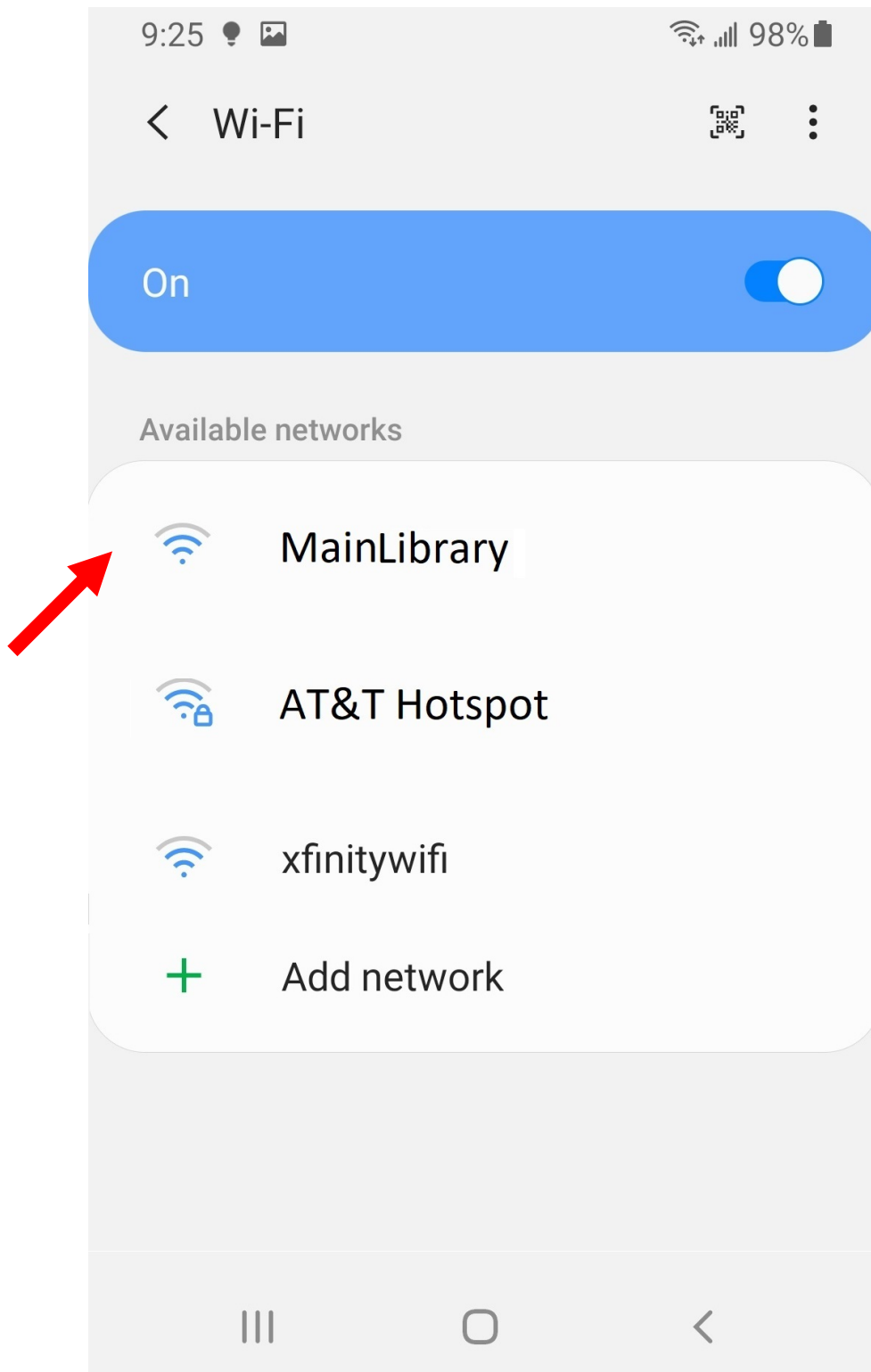


Settings screen



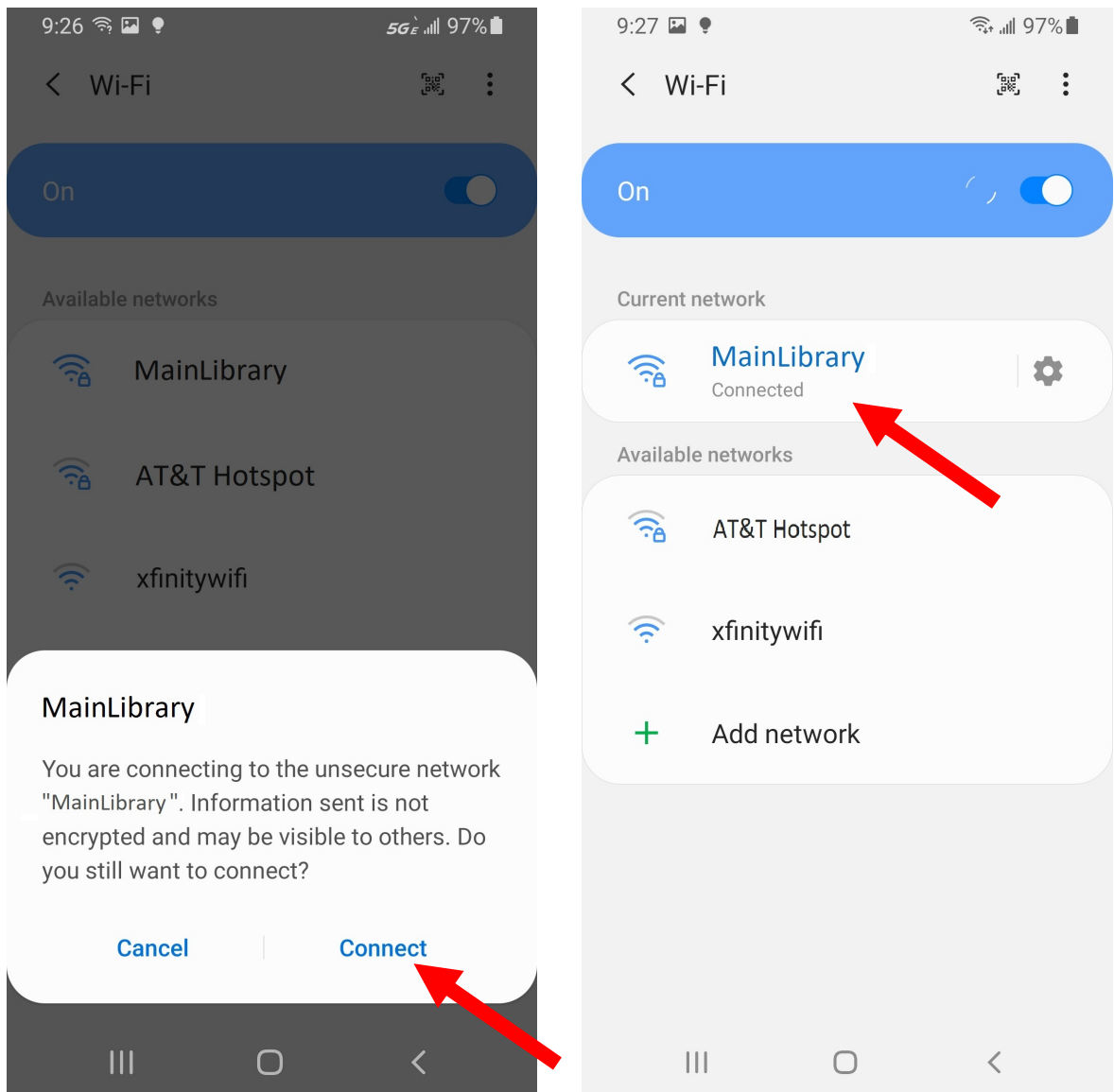
Connections screen

3. A list of wireless networks will be displayed under the “*Available networks...*” field. These are all the networks that are within range of your device. Find the network that displays the **Library’s Name** and select it. (Ex.”*MainLibrary*”)



Choose an available wireless network screen

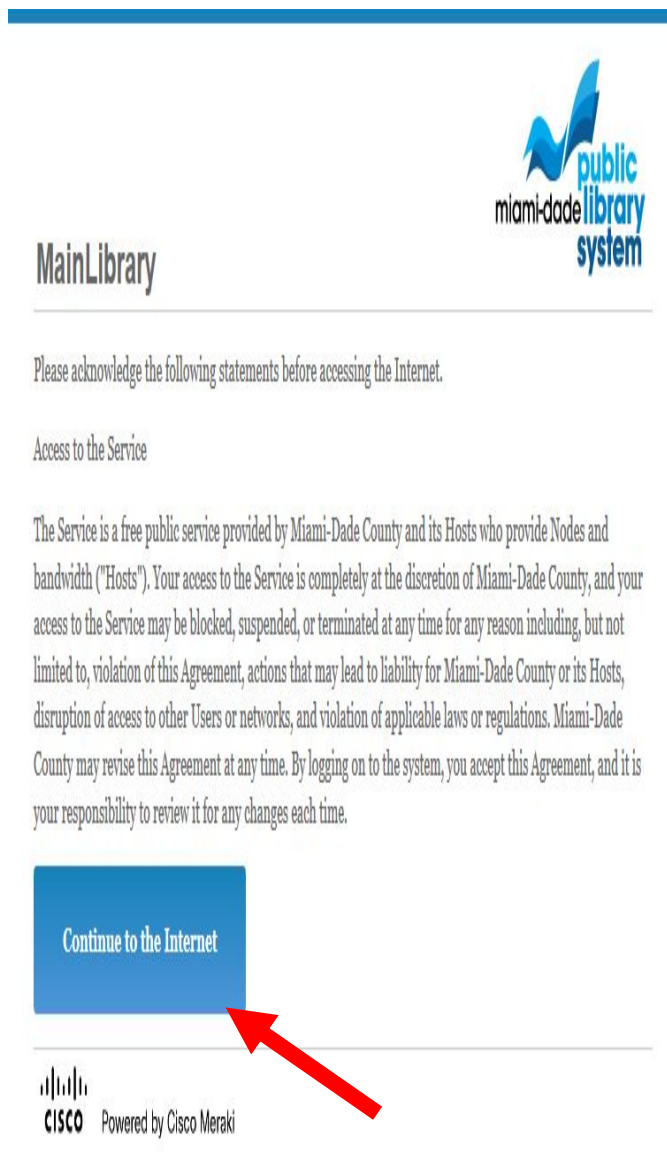
4. Select “*Connect*” button, the Android device will now attempt to connect to the network, and when finished, will display the Wi-Fi settings screen again, but this time with the joined network listed as “*Connected*” as shown below.



5. Now that your connection has been established, open your internet browser.

NOTE: Some Android devices may open your browser automatically.

You will be directed to the page shown below:



Click **Accept** to access the Internet.

Limitations and Disclaimers

- The Library's wireless network uses an unsecure open connection. Information sent from or to your laptop can be captured by anyone else with a wireless device and the appropriate software, within three hundred feet
- Library staff is not able to provide technical assistance and no guarantee can be provided that you will be able to make a wireless connection
- The Library assumes no responsibility for the safety of equipment or for laptop configurations, security, or data files resulting from connection to the Library's network
- Printing is available at all Library locations from your personal Laptop or mobile device. If printing is desired you may sign up for one of the Library's PC'S or request a laptop, and print via the Library's print management system, or utilize our Mobile Printing feature. For more details on mobile printing, please visit our website at www.mdpls.org.

Library Name	(SSID) Wireless Network Name	Library Name	(SSID) Wireless Network Name
Allapattah	➤ Allapattah	Main Library	➤ MainLibrary
Arcola Lakes	➤ ArcolaLakes	Miami Beach Regional	➤ MiamiBeach
Bay Harbor	➤ BayHarbor	Miami Lakes	➤ MiamiLakes
Civic Center	➤ CivicCenter	Miami Springs	➤ MiamiSprings
California Club	➤ CaliforniaClub	Model City	➤ ModelCity
Coconut Grove	➤ CoconutGrove	Naranja	➤ Naranja
Concord	➤ Concord	North Central	➤ NorthCentral
Coral Gables	➤ CoralGables	North Dade Regional	➤ NorthDade
Coral Reef	➤ CoralReef	North Shore	➤ NorthShore
Country Walk	➤ CountryWalk	Northeast	➤ Northeast
Culmer/Overtown	➤ CulmerOvertown	Opa-Locka	➤ Opa-Locka
Doral	➤ Doral	Palm Springs North	➤ PalmSprings
Edison	➤ Edison	Palmetto Bay	➤ PalmettoBay
Fairlawn	➤ Fairlawn	Pinecrest	➤ Pinecrest
Golden Glades	➤ GoldenGlades	Shenandoah	➤ Shenandoah
Hialeah Gardens	➤ HialeahGardens	South Dade Regional	➤ SouthDade
Hispanic	➤ Hispanic	South Miami	➤ SouthMiami
Homestead	➤ Homestead	South Shore	➤ SouthShore
International Mall	➤ IntlMallLibrary	Sunny Isles Beach	➤ SunnyIsles
Kendale Lakes	➤ KendaleLakes	Sunset	➤ SunsetLibrary
Kendall	➤ Kendall	Tamiami	➤ Tamiami
Key Biscayne	➤ KeyBiscayne	Virrick Park	➤ VirrickPark
Lakes of the Meadows	➤ LakesoftheMeadows	Westchester Regional	➤ Westchester
Lemon City	➤ LemonCity	West Flagler	➤ WestFlagler
Litter River	➤ LitterRiver	West Kendall Regional	➤ WestKendall